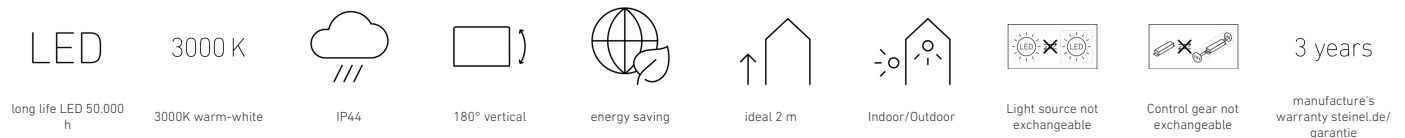
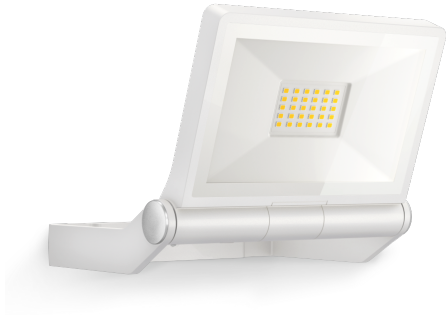


LED floodlight without sensor

XLED ONE

white
EAN 4007841 065218
Article number 065218



Function description

Astonishingly efficient. Extra-long service life. The XLED ONE wall and ceiling spot impresses with modern LED technology and provides 3000 K and 2050 lm of warm white light from an energy-saving 17,8 W. The aluminium panel can be tilted through 180°. With high-quality and powerful reflector as well as long-life LEDs (30 years).

Technical specifications

Dimensions (L x W x H)	173 x 229 x 195 mm
With lamp	Yes, STEINEL LED system
With motion detector	No
Manufacturer's Warranty	3 years
Version	white
PU1, EAN	4007841065218
Application, place	Outdoors
Application, room	outdoors, all round the building, courtyard & driveway
Installation site	wall, ceiling
Installation	Wall, Ceiling, Surface wiring
Impact resistance	IK03
IP-rating	IP44
Protection class	I
Ambient temperature	from -20 up to 40 °C
Housing material	Aluminium
Cover material	Glass transparent

Mains power supply	220 – 240 V / 50 – 60 Hz
Photo-cell controller	No
Luminous flux total product	2050 lm
Measured luminous flux (360°)	2050 lm
Total product efficiency	115 lm/W
Colour temperature	3000 K
Colour variation LED	SDCM3
Lamp	LED cannot be replaced
LED life expectancy (max. °C)	50000 h
Service life LED L70B50 (25°)	> 36000 h
Drop in luminous flux in accordance with LM80	L70B10
LED cooling system	Passive Thermo Control
Basic light level function	No
Output	17,8 W
Colour Rendering Index CRI	= 80
Product category	LED floodlight without sensor

<https://www.steinell.de>

Subject to technical modifications

12.2024 Page 1 from 2

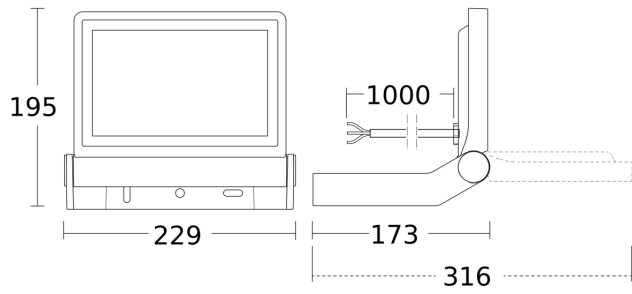
LED floodlight without sensor

XLED ONE

white
EAN 4007841 065218
Article number 065218



Dimension Drawing



Circuit diagram

